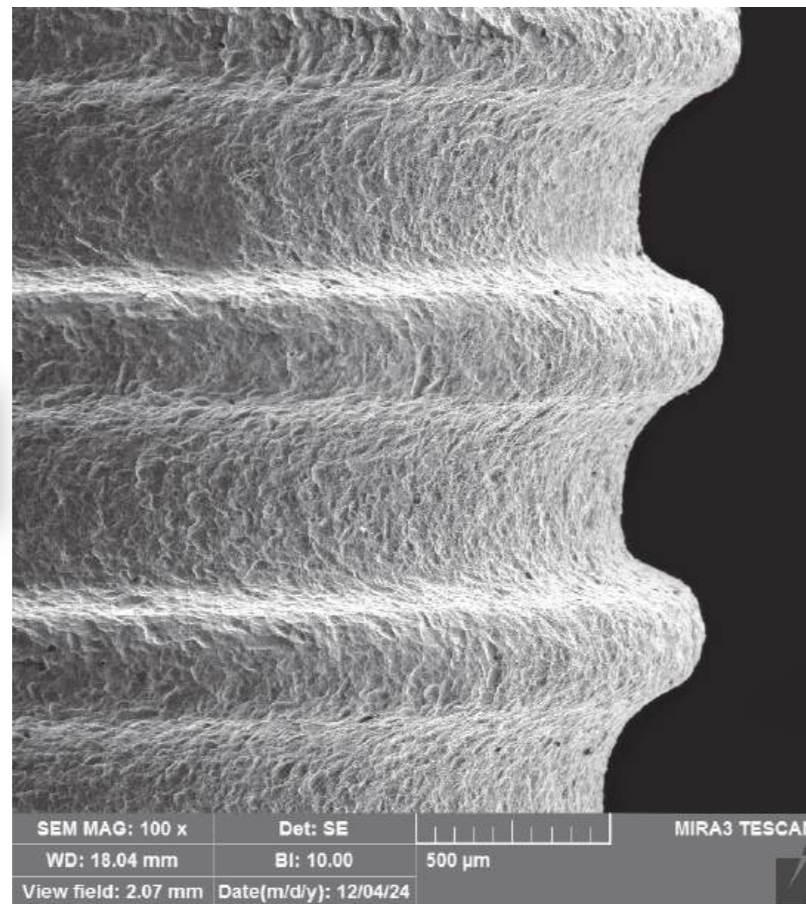
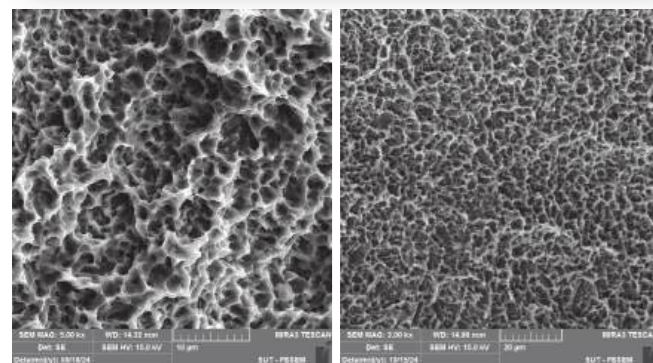


SLA SURFACE

(SANDBLAST LARGE GRIT ACID ETCH)

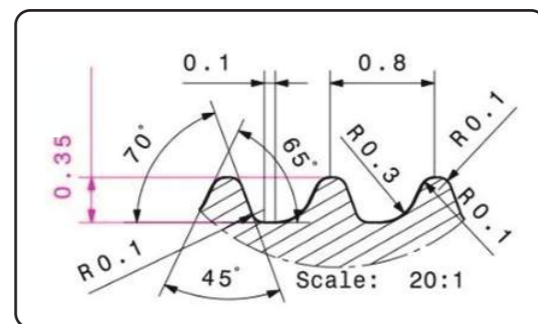
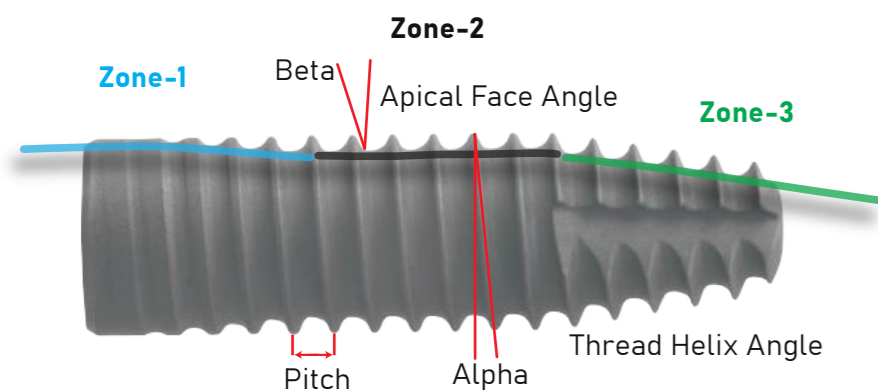


Enhanced Osseointegration: SLA surface promotes osseointegration through increased cell adhesion and bone formation around the implant.

Surface Roughness (2.2 - 2.5 Micrometers): The treatment creates both macro and micro roughness on the implant surface. This roughness increases the surface area and energy, which helps in better bone-to-implant contact. The rough surface allows for better mechanical interlocking with the bone, enhancing the primary stability of the implant.

Reduced Healing Time: SLA surface shows a shorter healing period. The optimized surface topography allows bone cells to colonize the implant more quickly, and accelerates the healing process and enables earlier loading.

Increased Wettability (Hydrophilicity): The SLA surface improves the wettability of the implant, which enhances the initial interaction between the implant and the biological environment, further supporting osseointegration.



Wisely chosen, simply done



BLPLine		NARROW		REGULAR		
Length mm	Diameter mm	Ø 3.3	Ø 3.7	Ø 4	Ø 4.5	Ø 5
6		-	-	-	BPI4506	BPI5006
8		BPI3308	BPI3708	BPI4008	BPI4508	BPI5008
10		BPI3310	BPI3710	BPI4010	BPI4510	BPI5010
12		BPI3312	BPI3712	BPI4012	BPI4512	BPI5012
14		BPI3314	BPI3714	BPI4014	BPI4514	BPI5014

NARROW

Connection:

Morse 11°

Hex: 1.7

M1.4 Thread

Platform Switching Bone Level Features

- Bone Control Design with Optimized Crestal Bone Preservation
- Soft Tissue Stability
- Consistent Emergence Profile

Material

- Pure Titanium Grade 4
- Excellent Performance in Long Term Clinical Investigation

Hybrid Design

- Tapered Apex

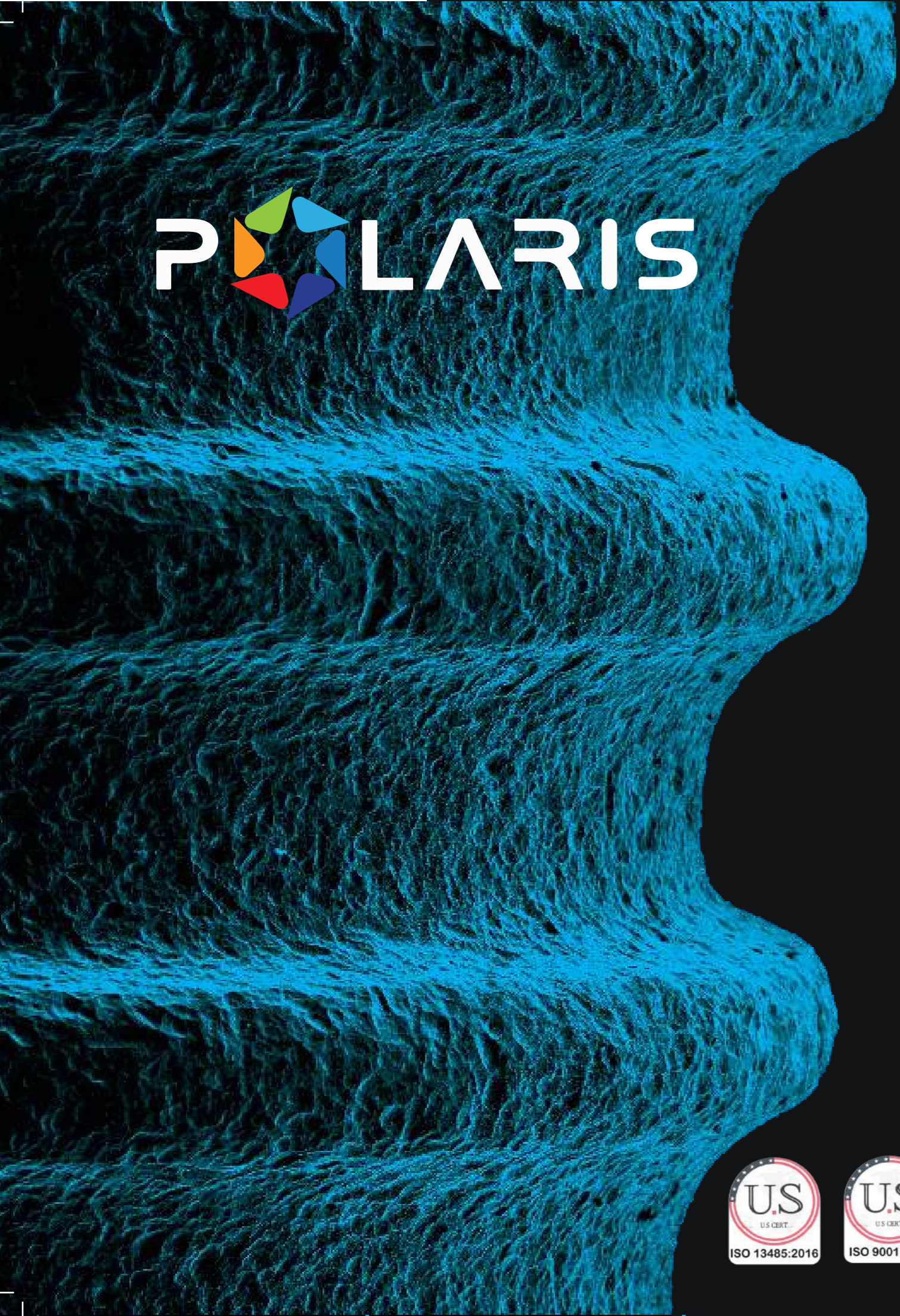
Cutting Edge

- 3 Cutting Edges
- Rounded Tip



Digital Parts





POLARIS

POLARIS GmbH
Humboldtstraße 12 - D40723 -
Hilden - Germany
Phone : +49 (0) 21033373500
Email: info@polarisgmbh.de
www.polarisgmbh.de



REGULAR
Connection:
Double Morse 11
Hex: 2.5
M2 Thread

Coronal
With Morsed Tapered Connection
Easy Handling,
Confident Positioning,
Sustainable Stability

Straight Body

Tapered Apex
Provides a High Primary
Stability in Soft Bone

Prosthetic Parts
Widespread

